

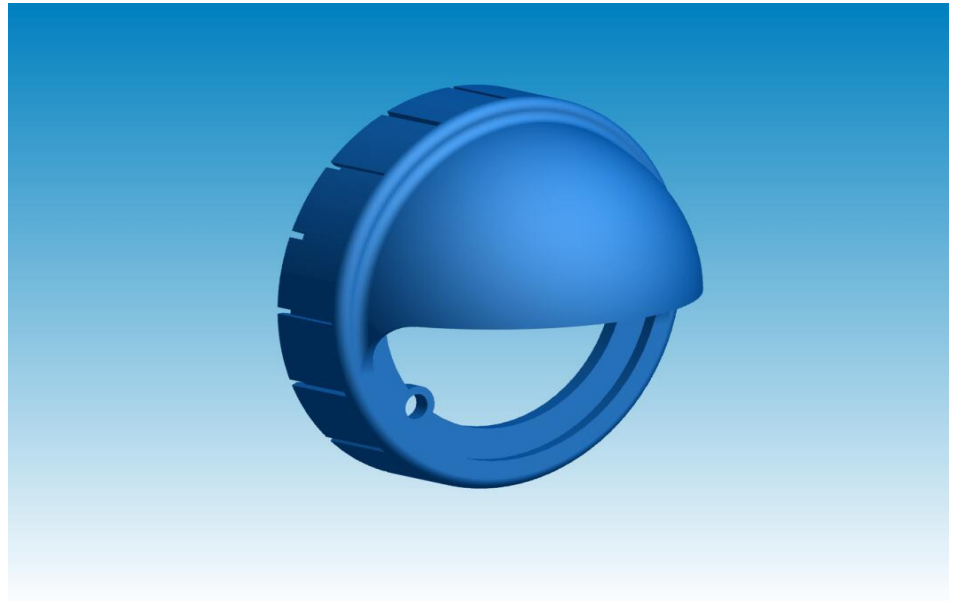
BLUES™

SYSTEM

Eyelid

Specifications

- Available in Black or White
- Simply clips on once ring (supplied) is fitted to dome
- Fully rotatable for any angle



The eyelid is used to mask the source of a bluedome and once fitted will cover half of the dome. The eyelid can be rotated to the desired position via the mounting ring. In public environments, the eyelid can set in position and fixed to the mounting ring with appropriate adhesive if required

Global Design Solutions



www.gds.uk.com

Global Design Solutions, 176 Brynland Avenue, Bristol United Kingdom BS7 9DY Tel: +44 870 2244822 Email: