

LiteWare

The original range of wireless LED battery uplighters

UL | HO | SATELLITE



Straight forward thinking

LiteWare SATELLITE | 80w

LiteWare Satellite is the newest member of the successful LiteWare family and provides a completely flexible new way of thinking for battery based Luminaries.

With a remote, fully adjustable head offering 360deg pan and 180deg tilt, focusing your light anywhere has never been easier. Additionally LiteWareSAT can be instantly modified with the use of the innovative internally wired extendable pole to offer elevation between 1.7m – 2.6m. The poles offer a weather proof quick lock mechanism to insure maximum speed of deployment.

Integral, rugged Aerial Design

3 Year Warranty*

Uncalibrated option for more user flexibility and higher output

RX/TX option, for transmit and receive on every unit

5 channel control option with master fade and preset recall

Easily upgradable firmware on all models

Made in UK · Over 14 Hours run time on satellite · Lens Beam angle options available 19, 24, 37 degrees · Designed for indoor and outdoor use · Low Heat · No Cables · No 230Volt

Specifications

W-DMX & SHoW DMX Control
Integral, rugged Aerial Design
14 hour runtime from fully charged
Weather proof design
50 preset colours Lee and Rosco
20 preset snaps/fades
Charging cycle 6 hours

Available singularly or in Flightcases with inbuilt charging
Finished in mirrored stainless steel to blend in with any surrounding
Kensington Security lock ready
Lumen Output RGB 1800lm
Lumen Output Warm White 2500lm



| EXTENDABLE

The head units can be easily interchanged and either mounted direct to the base unit, onto the pole or loose cabled for complete remote flexibility. There are 3 options. RGB, Warm white and Cool White.

Accessories include a metal base for stabilising the unit in full extension, barn door and gel holder attachments for the white versions. All the regular benefits to the LiteWare range are as standard with LiteWareSAT, charging and run time, charging flightcases, wireless control, indoor/outdoor use and a 3 year manufactures warranty.*

The LiteWareSAT docks are fully compatible with the LiteWare Range of charging flightcases.



1.7m

2.6m

*Warranty subject to manufacturers terms and conditions.

LiteWare UL | 40w

The original LiteWare RGB Up-lighter outputting 40watts of wireless RGB light with a reliable battery energy source encased in a stainless steel housing reflecting its own surroundings using Wireless DMX

Integral, rugged Aerial Design

3 Year Warranty*

Uncalibrated option for more user flexibility and higher output

5 channel control option with master fade and preset recall

Aerial modifications available on all previous versions of LiteWare

Easily upgradable firmware on all models

Made in UK · Industry Standard used by over 100 professional lighting companies worldwide · Lens Beam angle options available 15, 24, 32 degrees · Designed for indoor and outdoor use · Low Heat · No Cables · No 230Volt



Breitling launch · New York



Jonathan Ross Show · London



Red Carpet Launch · Tokyo

Specifications

40W RGB LED emitter
W-DMX & SHoW DMX Control
Integral, rugged Aerial Design
24 hour runtime from fully charged (14 hours on full white)
Weather proof design
50 preset colours Lee and Rosco
20 preset snaps/fades

Charging cycle 6 hours
Available singularly or in Flightcases with inbuilt charging
Finished in mirrored stainless steel to blend in with any surrounding
Kensington Security lock ready
Lumen Output 900lm

* Warranty subject to manufacturers terms and conditions.

LiteWare HO | 80w

The High Output LiteWare RGB Up-lighter, outputting 80watts of wireless RGB light with a reliable battery energy source encased in a stainless steel housing reflecting its own surroundings using Wireless DMX.

Integral, rugged Aerial Design

3 Year Warranty*

Uncalibrated option for more user flexibility and higher output

RX/TX option, for transmit and receive on every unit

5 channel control option with master fade and preset recall

Aerial modifications available on all previous versions of LiteWare

Easily upgradable firmware on all models

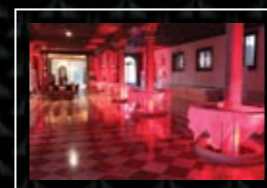
Made in UK · Industry Standard used by over 100 professional lighting companies worldwide · Lens Beam angle options available 15, 24, 32 degrees · Designed for indoor and outdoor use · Low Heat · No Cables · No 230Volt



San Fransico City Hall · USA



Nelson's Column · London



Scuola Grande S. Giovanni Evangelista · Venice

Specifications

80W RGB LED emitter
Wireless DMX Control
Integral, rugged Aerial Design
14 hour runtime from fully charged battery (6 hours on full white)
Weather proof design
50 preset colours Lee and Rosco
20 preset snaps/fades

Charging cycle 6 hours
Available singularly or in Flightcases with inbuilt charging
Finished in mirrored stainless steel to blend in with any surrounding
Kensington Security lock ready
Lumen Output 1800lm

* Warranty subject to manufacturers terms and conditions.

Accessories:



6 Way Charging Case · UL - HO



4 Way Charging Case · UL - HO



4 Way Charging Case · SAT



Grindle Cap · UL - HO - SAT



Extendable Pole · SAT



Floor Plate · SAT



Cool White Head · SAT



Warm White Head · SAT



RGB Head · SAT



www.gds.uk.com

Global Design Solutions UK · Unit 13 · Riverside Business Park
St Annes Road · Bristol · BS4 4ED · Email: info@gds.uk.com

[email:salesuk@gds.uk.com](mailto:salesuk@gds.uk.com)

tel: +44 (0) 117 325 0063

LiteWare charging apparatus - UK Patent No. GB2473474B · US Liteware charging apparatus - Pat. pending US12/598,330 · Liteware V2 - Pat. pending GB1103835.3
Lighting apparatus - Pat. pending GB1107353.3 · LiteWare - EU Reg'd Design 001600362-0001 · LiteWare Charger Case- EU Reg'd Design 001774555-0001 · LiteWare
US Pat. USD616,579 · Satellite - EU Reg'd Design 001868811-0001