



**Straight forward thinking**



## **SMConsole**

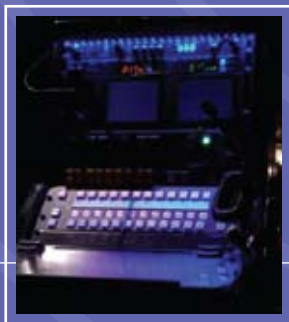
The GDS SMConsole range offers versatile, scalable Stage Management control systems catering for applications in small studio theatre's to the world's largest opera house in three different styles which have been installed all over the world.

# SMConsoles

Tailored stage managers desks.

The Stage Managers Console is at the heart of every production, supporting all aspects of the show from time keeping to every cue being executed in the right order and on time. The Stage Manager has the unenviable responsibility for this and needs a control position from where they can co-ordinate all areas of theatre both back stage and front of house.

GDS design and manufacture a range of bespoke stage managers consoles for any size venue to the international theatre and event industry. The company started manufacturing Stage Managers Consoles in 2006 and since then have supplied numerous consoles worldwide.



GDS took the opportunity to look at how the industry currently approached this complicated piece of equipment and gave a much needed review. As a result we developed a new approach in both hardware and software increasing sophistication and flexibility.

# Fiberglass enclosure



This desk is our most popular and comes with a uni-polar stand and locking casters, fibreglass enclosure with 19" facilities and desk storage space. It is compact and lightweight and has been specifically designed for medium to large theatre installations. Being easily removable from the stand, it is suited to control room and Front of house operation.

## Key Features:



- Lightweight/portable
- Detachable desk
- Shallow profile
- Left and Right hand operation
- Bespoke design
- Up to 12 ways of CueSystem
- Adjustable Height stand (optional)
- Fully programmable switches

The fiberglass enclosure SMConsole is ideally suited for medium to large venues that require up to 12 cue light channels and do not need third party equipment installed as this console is designed to be low profile to maximise the

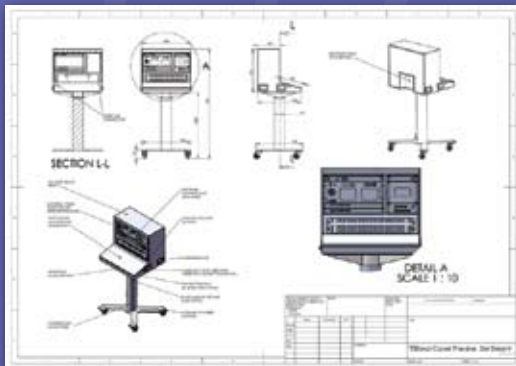
space in a prompt corner. The Console is constructed from reinforced fiberglass which makes it extremely light, strong and normally can be lifted from the stand by one person.

# Wooden enclosure



This desk is the largest case size and is designed with specific third party integration in mind, or where there is a requirement for a large number of cue light channels. The enclosure is of high quality ply construction and fits to the same design uni-polar stand offering all the same features as the fibreglass enclosure but with more space and depth to install larger pieces of 19" equipment.

## Key Features:



- Detachable desk
- Bespoke design
- Accommodation of 3rd party equipment
- Up to 24 ways of CueSystem
- Fully expandable to facilitate any equipment
- Adjustable height stand (optional)
- Fully programmable switches

The Wooden enclosure SMConsole case offers a larger control area and can accommodate up to 24 cue light channels, additional touch panels for working light controls and a further 19" panel section on the right for extra facilities. However, the Wooden

case is constructed from marine grade plywood, finished and polished black and is a more solid unit than the Fibreglass case. The wooden enclosure case is just as easily removed from the stand for control room or front of house operation.

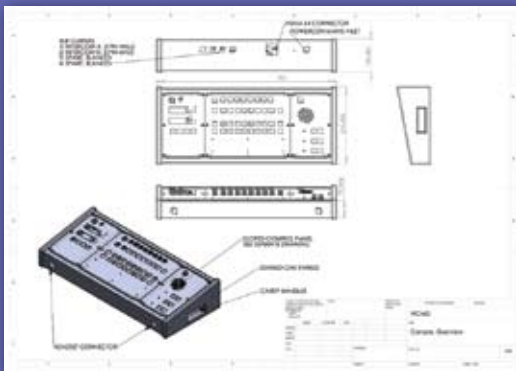
# Desk mount



Designed primarily for desk mounting this SMConsole is used in control rooms or smaller studio spaces and schools. Can also be used to complement a larger desk for a rehearsal second space. The console desk comes with Stalk lighting as standard.

---

## Key Features:



- Bespoke design
- Portable
- Scalable design
- Oak Cheeks
- Metal top
- Fully programmable switches

The larger console case can be made any width depending on the facilities that are required. In general the left section is reserved for clocks, timers and intercom, the middle section is cue lights, with functions such as

paging and intercom on the right panel. The cue light section normally comes with a padded wrist rest for the operator when using cue lights. LED Littlelites and digital step dimmers are supplied as standard.

# Key control facilities:

Within the GDS SM desk system a large number of facilities can be integrated into a single control platform. The type and number of facilities will depend on which case type is chosen for each project:

- Local lighting control (lighting for the operator of the desk).
- Remote lighting control (performance or specialist lighting applications).
- Video (Monitoring of video feeds)
- Audio Monitoring
- Clocks
- Timers
- Intercom
- Paging
- Auxiliary Control of any other items
- Cue Lights

## Head Office UK

Unit 13 · Riverside Business Park  
St Annes Road · Bristol · BS4 4ED · UK

**Tel:** +44 (0)117 325 0063

**Fax:** +44 (0)117 971 6202

**E-mail:** [info@gds.uk.com](mailto:info@gds.uk.com)



[www.gds.uk.com](http://www.gds.uk.com)