

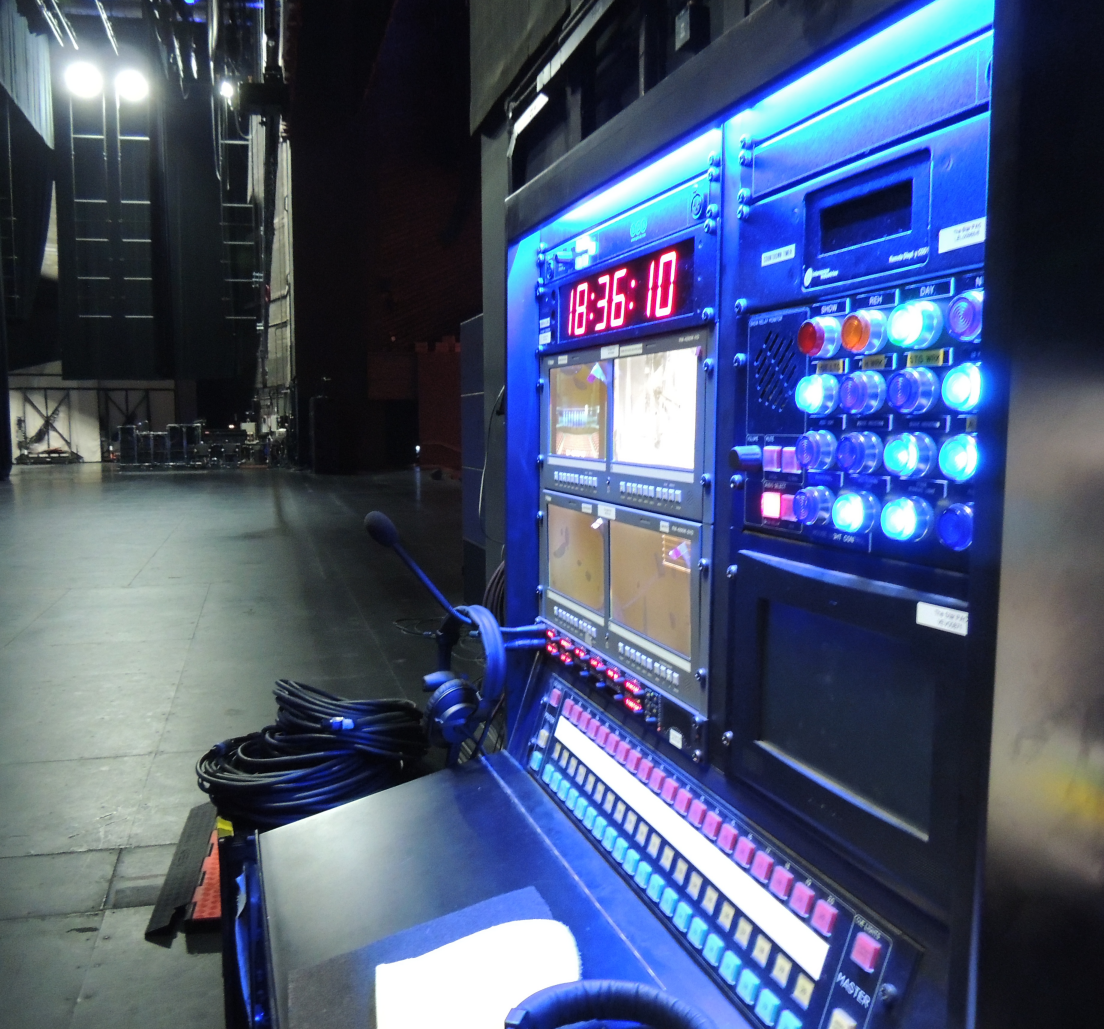


SMConsole



Intelligent stage management control systems, with modular design and built to your exact specifications.

The SM Console is your perfect partner, for reliable and consistent control, coordinating both backstage and front of house applications with ease.



SMConsole

GDS design and manufacture a range of bespoke Stage Management (SM) Consoles for any size venue to the international theatre and event industry.

For over 15 years, we have expertly fine tuned the SM Console specification, understanding the tailored application requirements for each venue and delivering the perfect product for your space.

Fiberglass enclosure

Our most popular desk, the Fiberglass enclosure comes with a uni-polar stand and locking casters, with 19" facilities and desk storage space.

Both compact and lightweight, the fiberglass SMConsole has been specifically designed for medium to large theatre installations. Easily removable from the stand, it is suited to control room and front of house operation.



Key features:

- * Lightweight and portable
- * Detachable desk
- * Shallow profile
- * Left and Right hand operation
- * Bespoke design
- * Up to 12 ways of CueSystem
- * Adjustable Height stand (optional)
- * Fully programmable switches



Ideally suited for medium to large venues, that require up to 12 cue light channels and do not need third party equipment installed. This console is designed to be low profile to ensure space in a prompt corner has been maximised to full effect.

The Fiberglass SMConsole is extremely light and strong, and can typically be carried and moved easily by one person.

Wooden enclosure

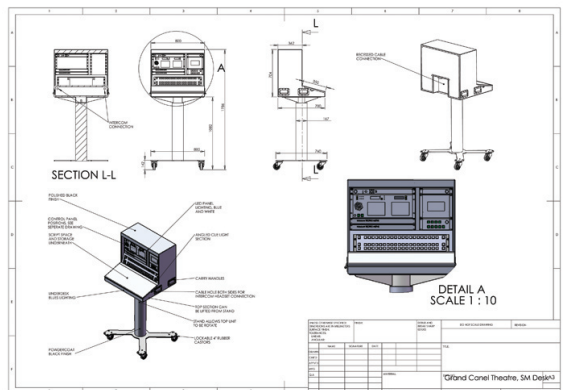
The Wooden enclosure desk is the largest size within the range, designed with specific third party integration in mind, or where there is a requirement for a large number of cue light channels.

The marine grade, high quality plywood construction fits to the same design uni-polar stand, offering all the same features as the fiberglass enclosure but with more space and depth to install larger pieces of 19" equipment.



Key features:

- Detachable desk
- Bespoke design
- Accommodation of 3rd party equipment
- Up to 24 ways of CueSystem
- Fully expandable to facilitate any equipment
- Adjustable height stand (optional)
- Fully programmable switches



The Wooden enclosure SMConsole offers a large control area and can accommodate up to 24 cue light channels, additional touch panels for working light controls and a further 19" panel section on the right for extra facilities.

The Wooden enclosure is a more solid unit, compared to the Fiberglass enclosure, yet can still be easily removed from the stand, for control room or front of house operation.

Desk Mount

Designed primarily for desk mounting, this SMConsole is used in control rooms or smaller studio spaces and schools.

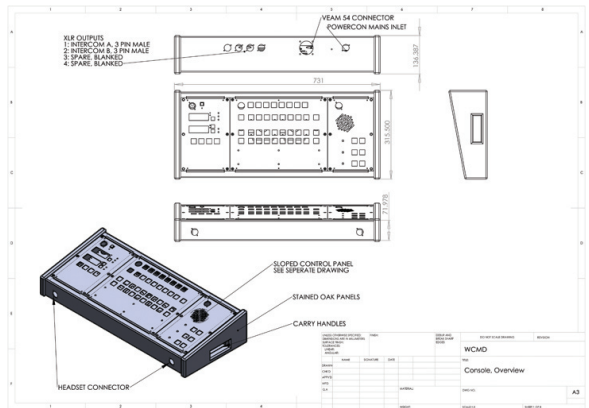
The Desk Mount console can also be used to complement a larger desk for a rehearsal second space.

The console desk comes with Stalk lighting as standard.



Key features:

- * Bespoke design
- * Portable
- * Scalable design
- * Oak Cheeks
- * Metal top
- * Fully programmable switches



The larger console case can be made any width depending on the facilities that are required. In general the left section is reserved for clocks, timers and intercom, the middle section is cue lights, with functions such as paging and intercom on the right panel.

The cue light section comes with a padded wrist rest for the operator when using cue lights. LED Littlelites and digital step dimmers are supplied as standard.



Get in Touch



Pioneering Light

Working closely with Stage Managers and Technicians across the globe, GDS design and build each SMConsole to order and tailor to your exact performance requirements.

Get in touch with us today to discuss your SMConsole requirements:

+44 (0)1173 250 063
sales@gds.uk.com
www.gds.uk.com